

RPsp - Supra

Inclined Platform Lifts

ThyssenKrupp Access
Life Uplifted.



ThyssenKrupp

RPsp

Inclined Platform Lift Straight Staircases

RPsp is made using high value materials. All the exposed surfaces/parts (rail, platform, safety bars) are made of anodized aluminium to guarantee you a rust free product. High precision construction and a pleasant design confirm the excellence of our product. The rail design allows to be in harmony with every environment and can be used as a handrail.

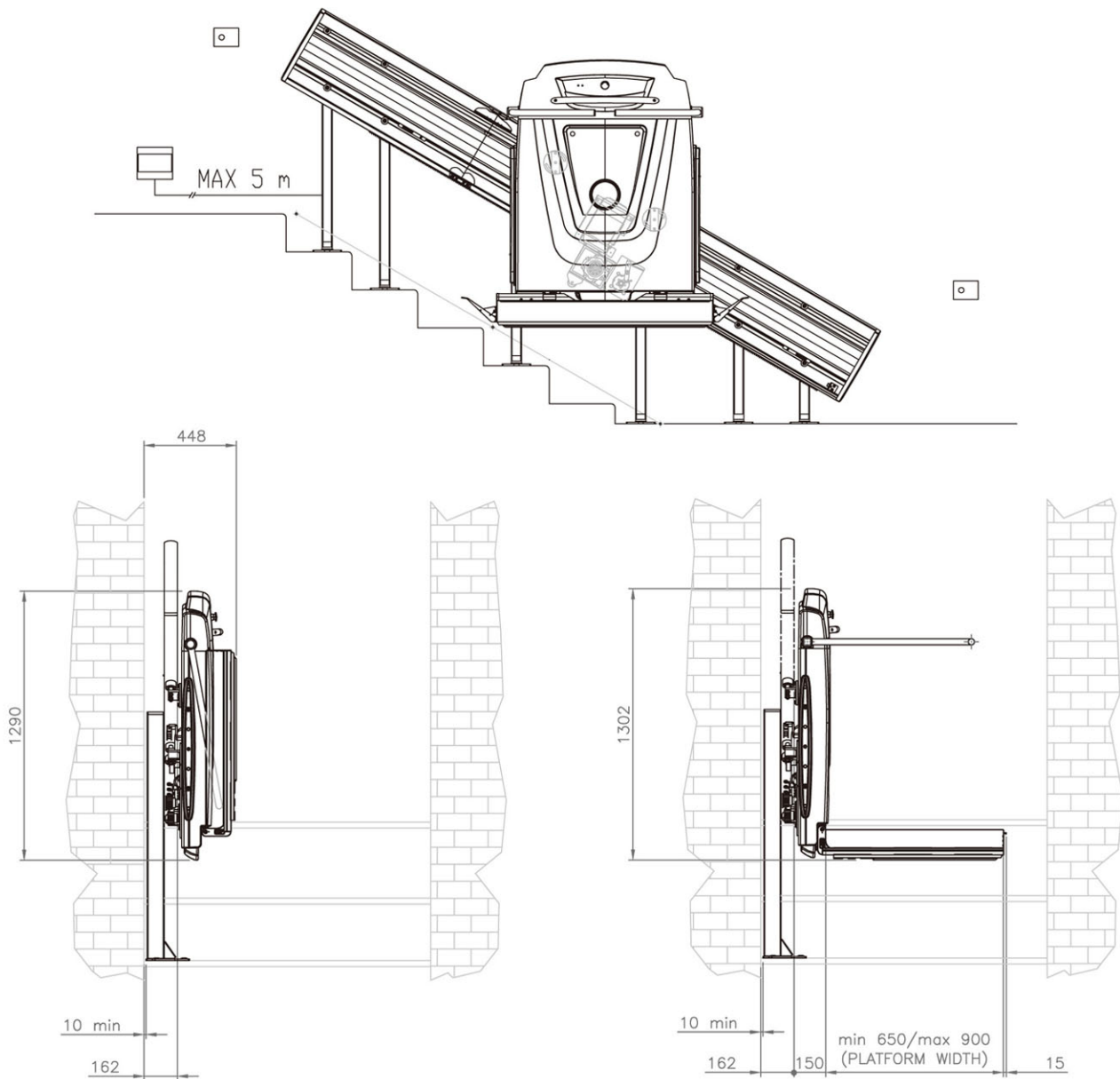
RPsp can be installed both on vertical stanchions as well as directly onto the wall.

RPsp (CE, TUV certified) is compliant to the European Machine Directive 2006/42/CE and EN81-40. The lift is fitted with anti-crushing and anti-shearing safety devices. An overload sensor is also available as option. A rated load of 325kg and platform dimension up to 1250×900mm make the RPsp an actual heavy duty product.

RPsp is suitable for indoor and outdoor installations (IP55 version is also available).



RPsp Dimensions



Technical Specifications

Rated load	: 325 kg (0° - 36°) - 250 kg (up to 45°)
Speed	: 0.07 m/s (0.14 m/s for three-phase motor)
Power	: 0.75 kw (max)
Power supply	: 230 Vac 50/60 Hz single-phase
Maximum travel	: 40 m
Standard platforms	: 860 mm × 650 mm 860 mm × 710 mm 1050 mm × 850 mm 1250 mm × 850 mm
Max angle of incline	: Up to 45°
Norm compliance	: D.M.236/89; EN 81-40; TUV 103; Machine Directive 2006/42/EC
Certifications	: TUV CE

Options

- Customized platform size
- Motorized opening/closing platform
- On wall remote control
- Outdoor version (IP 55)
- High speed (0.14 m/s) version
(soft start included 0.75 kw motor)
- Anti-blackout device (available with the high speed version only)
- Radio remote control
- Mobile long side flap
- Foldable seat
- Cover cloth

Supra

Inclined Platform Lift Curved Staircases

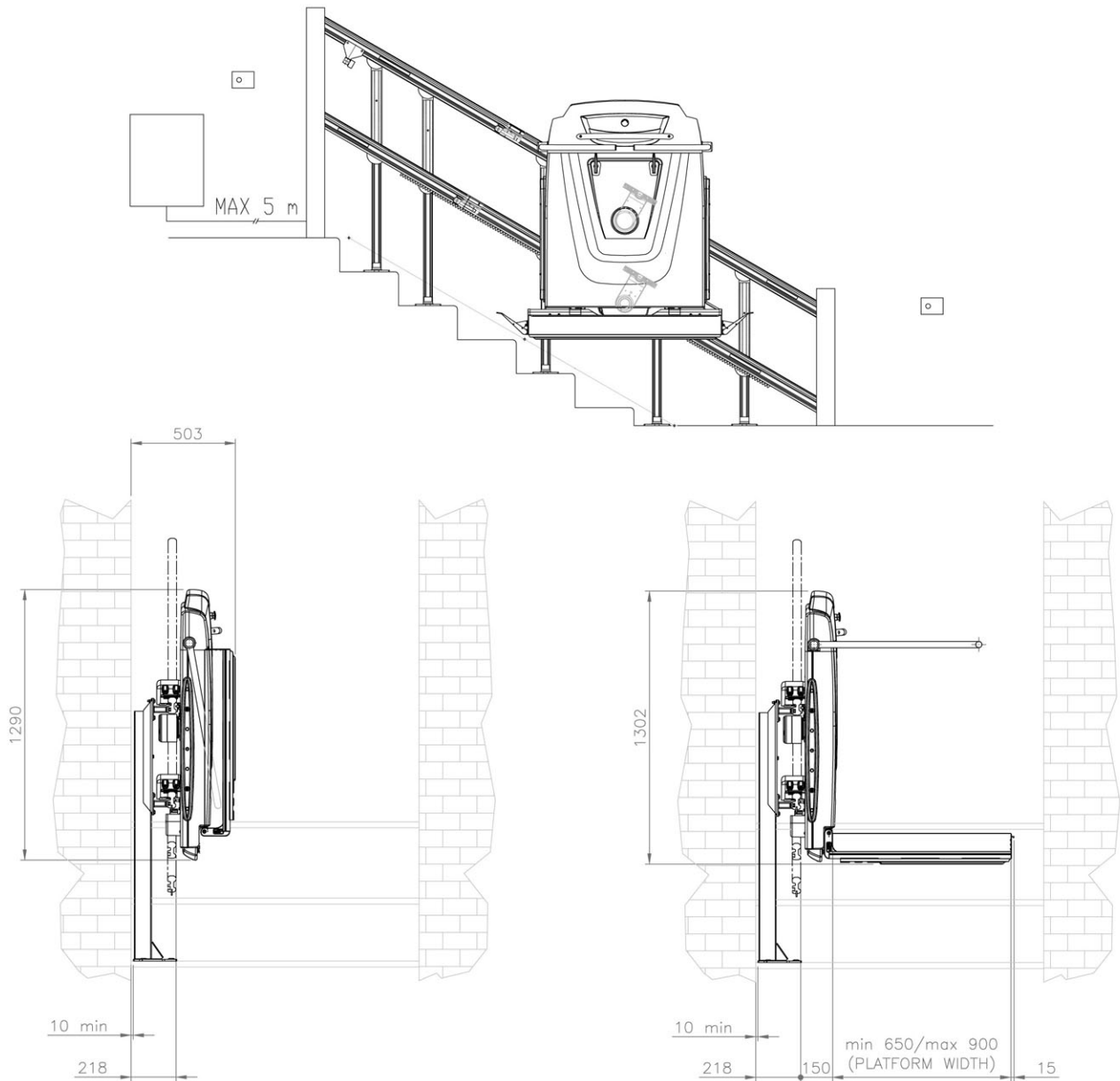
Supra is designed to overcome multiple curved stairs with variable gradient. Supra is an inclined platform lift, advanced in design and ergonomics, created to meet the needs of customers, requiring the best in comfort and quality.

Because of its unique rail concept, Supra is suitable for installation in virtually any type of staircase, straight and curved. Supra's double rail concept is robust in design and doubles up as a handrail, making optimal use of space.

Its aluminium rails (RAL 9006) and accurate, detailed design make it unique. Exceptional engineering offers utmost reliability and safety under any conditions. Special anti-crush and anti-shearing devices stop the machine in the event of danger. The 'soft start and stop' feature means that you will arrive gently at upper and lower landings.



Supra Dimensions



Technical Specifications

Rated load	: Maximum 300 kg
Speed	: 0.07 m/s with 350 W motor 0.13 m/s with 700 W motor
Power	: 0.75 kw (max)
Power supply	: 230 Vac 50/60 Hz
Standard platforms (LxW)	: 860 mm × 650 mm 860 mm × 710 mm 1050 mm × 850 mm 1250 mm × 850 mm (straight stairs)
Maximum travel	: 40 m
Max angle of incline	: Up to 45°
Norm compliance	: D.M.236/89; EN 81-40; Machine Directive 2006/42/EC
Certifications	: TUV CE

Options

- Customized platform size
- Motorized opening/closing platform
- On wall remote control
- Outdoor version
- High speed (0.14 m/s) version
- Anti-blackout device
- Radio remote control
- Mobile long side flap
- Foldable seat
- Cover cloth

Did we inspire you?

ThyssenKrupp Access

3 International Business Park
#06-01 Nordic European Centre
Singapore 609927
Phone: +65 6100 0106
Email: info.tkaasia@thyssenkrupp.com
www.tkaccessasia.com